

GME Consult offers

grouting materials for reinforcement of coal, rocks, soil, sand and engineering constructions, and for sealing of water and gas leakages in the field of mining, structural, underground and civil engineering.



Products of the company

- dual-component polyurethane resins of GEOPUR® type certified for use in civil engineering and mining and for use in contact with drinking water
- dual-component polyurethane organic-mineral resins of SUPERMIN type certified for use in civil engineering and mining and for use in contact with drinking water
- single-component polyurethane grouting resin GEOCREAM for sealing and stanilization of sand under groundwater table level, grouting of masonry and constructions
- chemical dual-component materials SANDROCK on silica gel basis certified for use in civil engineering and for use in contact with drinking water
- chemical dual-component sealing resin SPOTISOL for prevention of mine fires certified for use in mines

GME CONSULT

Geology, Geotechnics, Mining, Environment



Using of polyurethane organic-mineral material for concrete sewer lining



Micropiling of building foundations



Reinforcement and sealing of concrete of subway track in Budapest



Micropiling of buildings



Grouting of stone bridge, reparation of bridge insulation and reinforcement



Sealing of gas emanations at the Hullera Vasco Leone mine, Spain 2006



Sealing and reinforcement of the surrounding of concrete water channel under the flood dam of the Danube River near Nove Selo, Serbia, Vojvodina



Sealing and reinforcement at the Alsovo Riverbank in Prague after the flood event in 2003

GME CONSULT, Stodolní 17
70200 Ostrava, Czech Republic
Phone number/fax: 0042 596 111 841, mobil:0042 603 472 126
www.gmeconsult.cz, e-mail:gme.consult@tiscali.cz

Anchoring elements

Grouting elements Pakran

SN anchors of various dimensions

Reinforcement of GT type for primary tunnel linings

Drilled and driven grouting needles

Drilled grouting anchors AR 25,32

Grouting pumps

Electric drive grouting pump

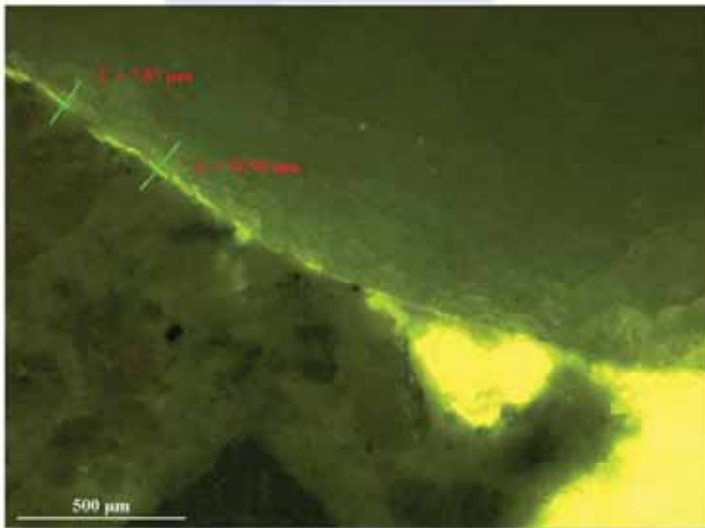
Grouting packers

Mechanical grouting packers

Hydraulically installed grouting packers



Sealing of Berdu dam in Romania



Grouting of concrete constructions, Geopur material inside of fissure of width of $L = 7,57 \mu\text{m}$



Anchoring of steel constructions and grouting of masonry

REFERENCES

Grouting materials Geopur have been used since 1994 in hundreds of various applications by several firms. Materials have been used in the Czech Republic, Hungary, Romania, Serbia, Spain, Russia and Slovakia.

Most significant projects are the following:

Grouting of bridge pillars and subsoil near Napajedla, 1999

Stabilization and sealing of mine pits at the Ostrava coal region, 1997-1999

Stabilization of flood dams at the Tisza River during the flood event in Hungary, 2001

Stabilization of flowing sands in the subsoil of Gedeon Richter building in Budapest, 2002

Securing of stope during utility tunnel driving in Ostrava, 2003-2004

Stopping of water flows under the Berdu Baija Mare dam, Romania 2003-2004

Sealing and reinforcement of concrete tunnel of BKV METRO, Budapest, Hungary 2005-2006

Grouting at Kisköre water reservoir at the Tisza River, Hungary 2006

Stabilization during tunnel driving under the railway station in Brasov, Romania 2005

Sealing grouting to prevent gas emanations at the Hullera Vasco Leone mine, Spain 2006

Sealing of utility tunnel under the highway D47 near Novy Bohumin, 2006

Sealing and reinforcement of the surrounding of a concrete water channel under flood dam of the Danube River near Nove Selo, Serbia, Vojvodina 2006

and hundreds of other references